

AQUA

1000 HPW

WHAT IS AQUA 1000

- Aqua 1000 is a new washing system that reduces the cost of cleaning and makes the everyday life easier for everyone who works in the aquaculture industry.
- Aqua 1000 HPW mainly consists of a diesel-powered high-pressure washer that delivers as much water and working pressure as a high-pressure washer on a large service boat. You can use this in a light boat, and use service vessel with crane for other operations, saving a lot of resources.
- The washer is no larger than a euro pallet and has an integrated 50m high pressure hose, pistol lance with flush and turbo nozzle in the basic package.
- Aqua 1000 has several additional products such as pipes and rope washers. And Feed spreader washers.

A STANDARD BASIC PACKAGE:

- Stainless steel frame with guiding points below for straps, which means that moving with a crane occurs in a safe manner.
- Solid side cover in aluminum Stainless steel hose reel with automatic hose guide.
- 50m Hp hose
- Control panel with monitoring of temperature, oil level, speed, battery. Button for start, stop and main switch.
- 2 flushing lances.
 - a standard spray nozzle with 40 * spread.
 - a lance with turbo nozzle.



TECHNICAL DATA: ENGINE

BETA 30

- Number of cylinders - 3
- Volume - 1123cc
- Max hp at 3600 rpm - 30 hp
- Weight with gearbox - 139kg

- Low emissions
- Quiet
- Water cooled
- Glow plugs for cold start below 5 * C.
- Stainless steel exhaust.
- 12volt electric start with 65amp dynamo
- 3-year warranty from the factory, bases on self-service

TECHNICAL DATA: HIGH PRESSURE PUMP

UDOR HIGH PRESSURE PUMP

- 20 years of experience with the use of these on service boats and other applications within the maritime industries.
- Pressure – 200 bar
- Amount – 38 l / min

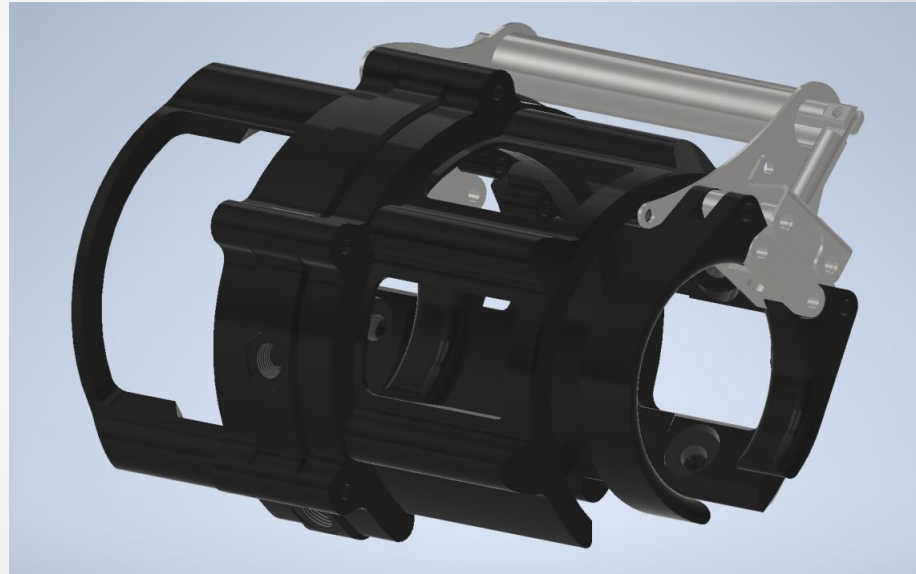
AQUA 1000 RPW

- Aqua 1000 Rope and Pipe Washer works perfectly for external flushing and cleaning of e.g. mooring ropes, feeding hoses, air hoses, ropes, and frame mooring. Flushing and cleaning of components in the cage can be done without disassembling and moving of equipment. It takes less time and with less use of resources.



AQUA 1000 RPW

- Aqua 1000 pipe and rope washer consist of 8 spray nozzles that are connected and driven by a larger high-pressure pump.
- Works optimally with a high pressure pump that delivers a working pressure of about 220 bar and around 40l / min
- Two sliders that make the washer follow the hose in the right position
- Connection that branches off to two manifolds with nozzles, which are evenly distributed



A CLEAR DIFFERENCE BEFORE AND AFTER WASHING

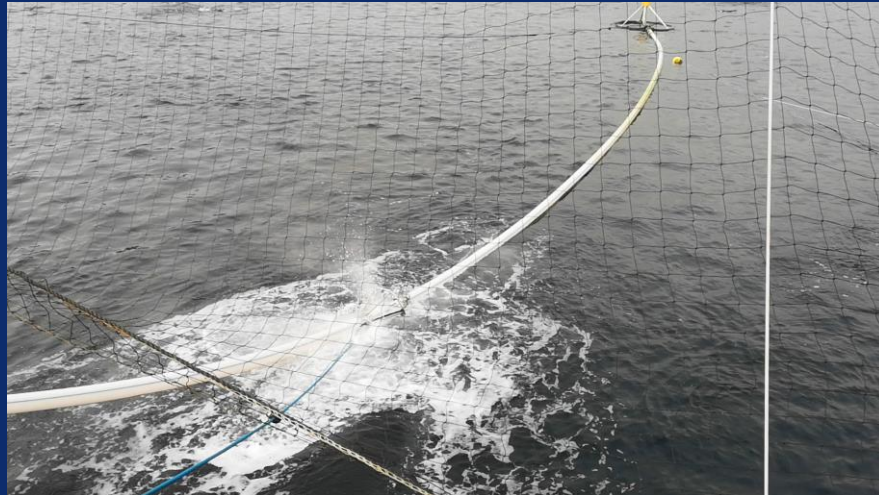
(The film shows a prototype without a full cover)



AQUA 1000 IN USE

Easy to use and very effective. You can clearly see where it has washed and not.

(The film shows prototype without full cover)



nomapro.com